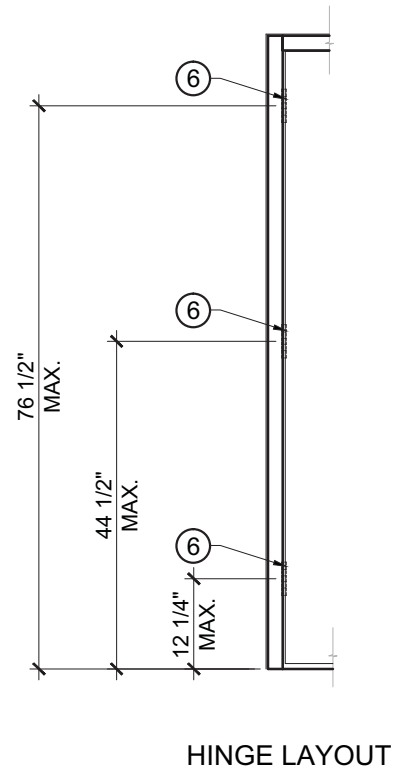
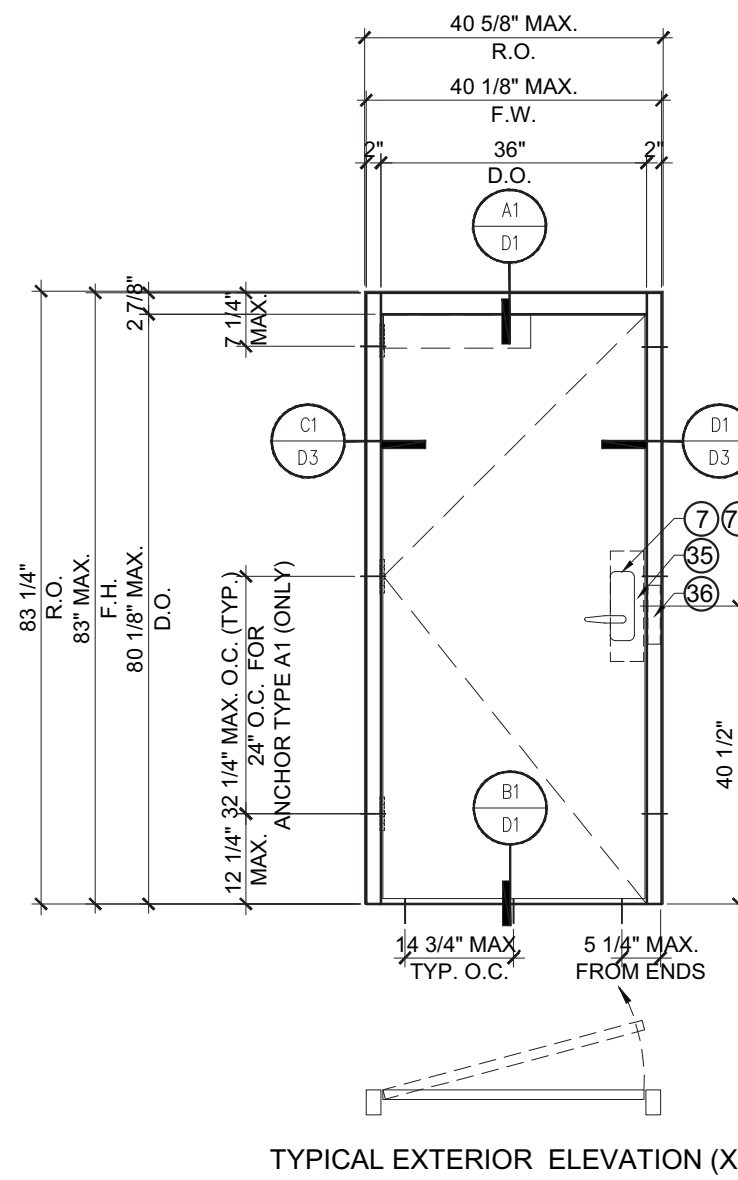


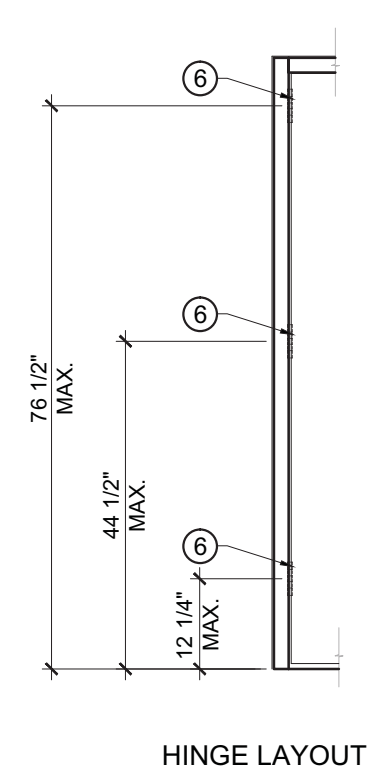
TYPICAL EXTERIOR ELEVATION (X)



HINGE LAYOUT



TYPICAL EXTERIOR ELEVATION (X)



HINGE LAYOUT

SERIES AF220 FIBERGLASS INSWING DOOR (LMI & SMI)

- THIS PRODUCT HAS BEEN DESIGNED AND TESTED TO COMPLY WITH THE REQUIREMENTS OF THE FLORIDA BUILDING CODE 2014 EDITION INCLUDING HIGH VELOCITY HURRICANE ZONE (HVHZ).
- DOOR RATED FOR LARGE AND SMALL MISSILE IMPACT AND DOES NOT REQUIRE SHUTTERS.
- THIS DOOR IS APPROVED FOR AIR AND WATER INFILTRATION.
- ANCHORS SHALL BE AS LISTED, SPACED AS SHOWN ON DETAILS. ANCHORS EMBEDMENT TO BASE MATERIAL SHALL BE BEYOND WALL DRESSING OR STUCCO.
- ANCHORING OR LOADING CONDITIONS NOT SHOWN IN THESE DETAILS ARE NOT PART OF THIS APPROVAL.
- MATERIALS INCLUDING BUT NOT LIMITED TO STEEL/METAL SCREWS THAT COME INTO CONTACT WITH OTHER DISSIMILAR MATERIALS SHALL MEET THE REQUIREMENTS OF 2014 FLORIDA BUILDING CODE SECTION AS APPLICABLE.
- METAL STRUCTURES NOT BY SPECIAL-LITE, INC. MUST SUPPORT LOADS IMPOSED BY DOOR SYSTEM AND TRANSFER THEM TO THE BUILDING STRUCTURE.
- WOOD BUCKS BY OTHERS MUST BE ANCHORED PROPERLY TO TRANSFER LOADS TO THE STRUCTURE.

- A LOAD DURATION FACTOR IN ALLOWABLE STRESS IS USED IN DESIGN OF ANCHORS INTO WOOD ONLY.
 - DOOR PANEL: 0.120" SANDSTONE FRP FIBERGLASS TEXTURED PANEL OR 0.120" PEBBLE GRAIN FRP TEXTURED PANEL.
 - DOOR FRAME: PULTRUDED FIBERGLASS
 - ULTIMATE DESIGN LOAD OBTAINED FROM ASCE 7-10, MULTIPLY BY 0.6, SHALL BE LESS THAN OR EQUAL TO MAX. DESIGN LOAD IN THIS DOCUMENT.
- NOTES:**
EGRESS REQUIREMENTS TO BE REVIEWED BY BUILDING OFFICIAL.

HARDWARE:

KABA 790 RFID MORTISE LOCK WITH KEY OVERRIDE (OR EQUIVALENT), 40 1/2" FROM BOTTOM W/ (2) 12 X 1" FH SMS,
 (2) 10-32 X 1/4" FH MS AND (3) 12-24 X 15/16" FH MS OR STANLEY MORTISE LOCK WITH KEY OVERRIDE (OR EQUIVALENT), 39" FROM BOTTOM W/ (2) 6 X 1/2" OH MS TO THUMB TURN, (2) 12 X 1" FH SMS TO LOCK.
 MOUNT METALLIC STRIKE PLATE, 40" FROM BOTTOM
 W/ (2) 12 X 1 1/2" FH SMS.
 SURFACE MOUNT METALLIC KEEPER, 1 5/8" FROM BOTTOM
 W/ (3) 8 X 3/4" FH SMS.
 IVES 253 SURFACE BOLT AT TOP AND BOTTOM (OPTION FOR DOORS ≤ 83" HEIGHT)
 HINGES: (3) 4 1/2" SURFACE MOUNT HAGER BB 1191 (OR EQUIVALENT) METALLIC BUTT HINGES W/ (4) 12 X 1" FH SMS TO FRAME AND PANEL, (8) TOTAL SCREWS PER HINGE.

DESIGN LOADS	
(FOR SIZES SHOWN ABOVE OR SMALLER) AS PERMITTED BY FBC	
+75.0 PSF	
-75.0 PSF	

ABBREVIATIONS AND SYMBOLS	
D.O. - DOOR OPENING	SECTION NUMBER
F.H. - FRAME HEIGHT	
F.W. - FRAME WIDTH	SHEET NUMBER
R.O. - ROUGH OPENING	
W - WITH	
WO - WITHOUT	
O.C. - ON CENTER	

LIMITATIONS OF USE

A- THIS PRODUCT EVALUATION DOCUMENT (P.E.D.) PREPARED BY THIS ENGINEER IS GENERIC AND DOES NOT PROVIDE INFORMATION FOR A SITE SPECIFIC PROJECT; I.e. WHERE THE SITE CONDITIONS DEVIATE FROM THE P.E.D.

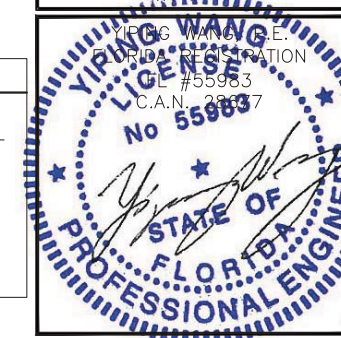
B- CONTRACTOR TO BE RESPONSIBLE FOR THE SELECTION, PURCHASE AND INSTALLATION OF THIS PRODUCT BASED ON THIS PRODUCT EVALUATION PROVIDED HE/SHE DOES NOT DEVIATE FROM THE CONDITIONS DETAILED ON THIS DOCUMENT.

C- THIS PRODUCT EVALUATION DOCUMENT WILL BE CONSIDERED INVALID IF ALTERED BY ANY MEANS.

D- SITE SPECIFIC PROJECTS SHALL BE PREPARED BY A FLORIDA REGISTERED ENGINEER OR ARCHITECT WHICH WILL BECOME THE ENGINEER OF RECORD (E.O.R.) FOR THE PROJECT AND WHO WILL BE RESPONSIBLE FOR THE PROPER USE OF THE P.E.D.

E- THIS P.E.D. SHALL BEAR THE DATE AND ORIGINAL SEAL AND SIGNATURE OF THE PROFESSIONAL ENGINEER OF RECORD THAT PREPARED IT.

FLORIDA APPROVAL:
FL#19664



NO	DATE	REVISIONS	DESCRIPTION

MCY ENGINEERING, INC.
 GLAZING CONSULTANTS
 8501 SW 124 AVE. SITE 205A P: 305.271.0117
 MIAMI, FL 33183 F: 786.573.5063
 WWW.MCYUS.COM MCY.Engineering@Att.net

AF220 FIBERGLASS INSWING DOOR (LMI & SMI)
 SPECIAL-LITE, INC.
 860 SOUTH WILLIAMS STREET
 P.O. BOX 6
 DECATUR, MI 49045
 WWW.SPECIAL-LITE.COM



COVER	
DATE	12/06/16
SCALE	AS SHOWN
DRAWN	T.G.
PROJECT	16-102
DRAWING NO. AD16-52	
1 OF 8	

TYPICAL ANCHORS (REFER TO ELEVATION FOR SPACING)

- TYPE A** **1/4" DIA. ULTRACON BY 'ELCO'** (Fy=155 ksi Fu = 177 ksi)
 * DIRECTLY INTO fc'=3000 PSI CONCRETE MIN.
 1-1/2" MIN. EMBED. INTO MASONRY OR CONCRETE, 2-1/2" MIN. EDGE DISTANCE
- TYPE A1** **1/4" DIA. ULTRACON BY 'ELCO'** (Fy=155 ksi Fu = 177 ksi)
 * DIRECTLY INTO SG=0.55 WOOD
 WITH 1-1/2" MIN. EMBEDMENT, 1" MIN. EDGE DISTANCE,
 OR THRU WOOD INTO CONCRETE OR MASONRY
 WITH 1-1/2" MIN. EMBEDMENT, 2-1/2" MIN. EDGE DISTANCE
- TYPE B** **3/8" DIA. HLC SLEEVE ANCHOR BY 'HILTI'**
 * DIRECTLY INTO fc'=3000 PSI CONCRETE MIN.
 1-1/4" MIN. EMBED INTO MASONRY OR CONCRETE, 3" MIN. EDGE DISTANCE
 * DIRECTLY INTO fm'=1500 PSI FILLED GROUT FILLED CONCRETE BLOCK
 1-1/4" MIN. EMBED INTO FILLED CONC. BLOCK, 3-1/2" MIN. EDGE DISTANCE
- TYPE C** **3/8" DIA. SLEEVE ANCHOR BY "WEJ-IT"**
 * DIRECTLY INTO fc'=4000 PSI CONCRETE MIN.
 2-3/8" MIN. EMBED, 3-1/2" MIN. EDGE DISTANCE
 * DIRECTLY INTO fc'=2000 PSI CONCRETE. BLOCK MIN.
 1-1/4" MIN. EMBED, 3-1/2" MIN. EDGE DISTANCE
- TYPE D** **3/8" DIA. POWER BOLTS**
 * DIRECTLY INTO fc'=3000 PSI CONCRETE
 2-1/2" MIN. EMBED, 3" MIN. EDGE DISTANCE
 * DIRECTLY INTO fc'=1500 PSI GROUT FILLED CONCRETE BLOCK
 2" MIN. EMBED, 3" MIN. EDGE DISTANCE
- TYPE E** **5/16" DIA. SMS OR MACHINE BOLTS GRADE 2 CRS OR ST/ST**
 * DIRECTLY INTO 1/8" THK. STEEL/ALUMINUM 6063-T5

SEALANT:

ALL FRAME JOINTS AND CORNERS TO BE SEALED WITH SILICONE AT PERIMETER

HINGES:

STEEL BUTT HINGES 3 PER LEAF.
 FOR HINGE LOCATION SEE SHEET 1.
 TO BE FASTENED BY (4) #12-24 x 1/2" FLATHEAD MACHINE SCREWS TO THE DOOR PANEL AND TO THE FRAME. TOTAL OF (8) SCREWS.

NOTE:

SUBSTRATE CAN BE CONCRETE, 2X WOOD BUCKS, WOOD STRUCTURAL MEMBER(S), CONCRETE BLOCK WALL AND METAL STRUCTURE (STEEL OR ALUMINUM). ANCHOR TYPE SHOWN ABOVE SHOULD BE CHOSEN BASED ON SUBSTRATE TYPE IN THE PROJECT. ANY TYPE OF ANCHOR NOT SPECIFIED HERE SHOULD BE ENGINEERED SEPARATELY.

NO	DATE	REVISIONS DESCRIPTION

MCY

MCY ENGINEERING, INC.
 GLAZING CONSULTANTS

8501 SW 124 AVE. STE. 205A P: 305.271.0117
 MIAMI, FL 33183 F: 786.573.5063
 www.MCYUS.com MCY.Engineering@Att.net

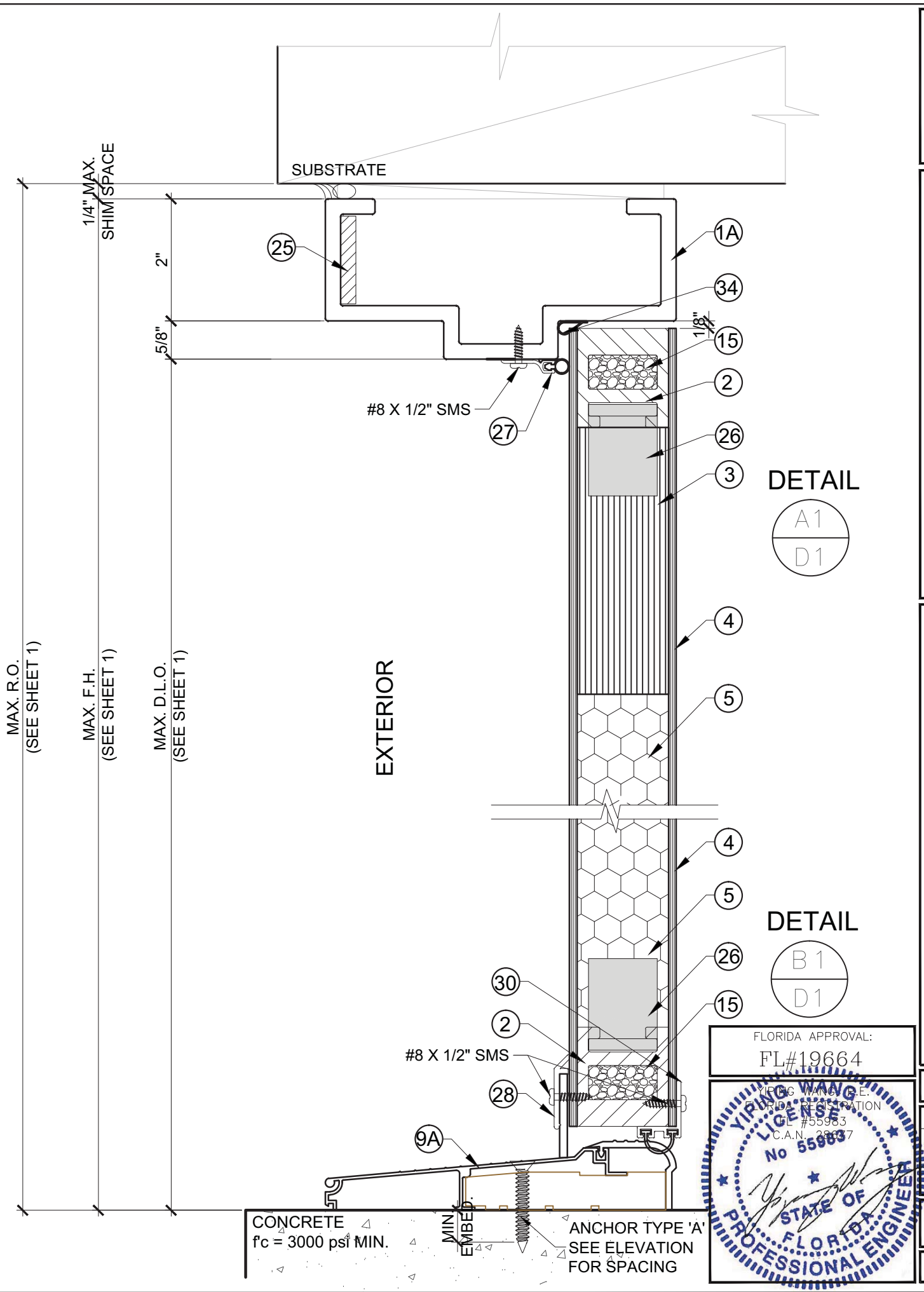
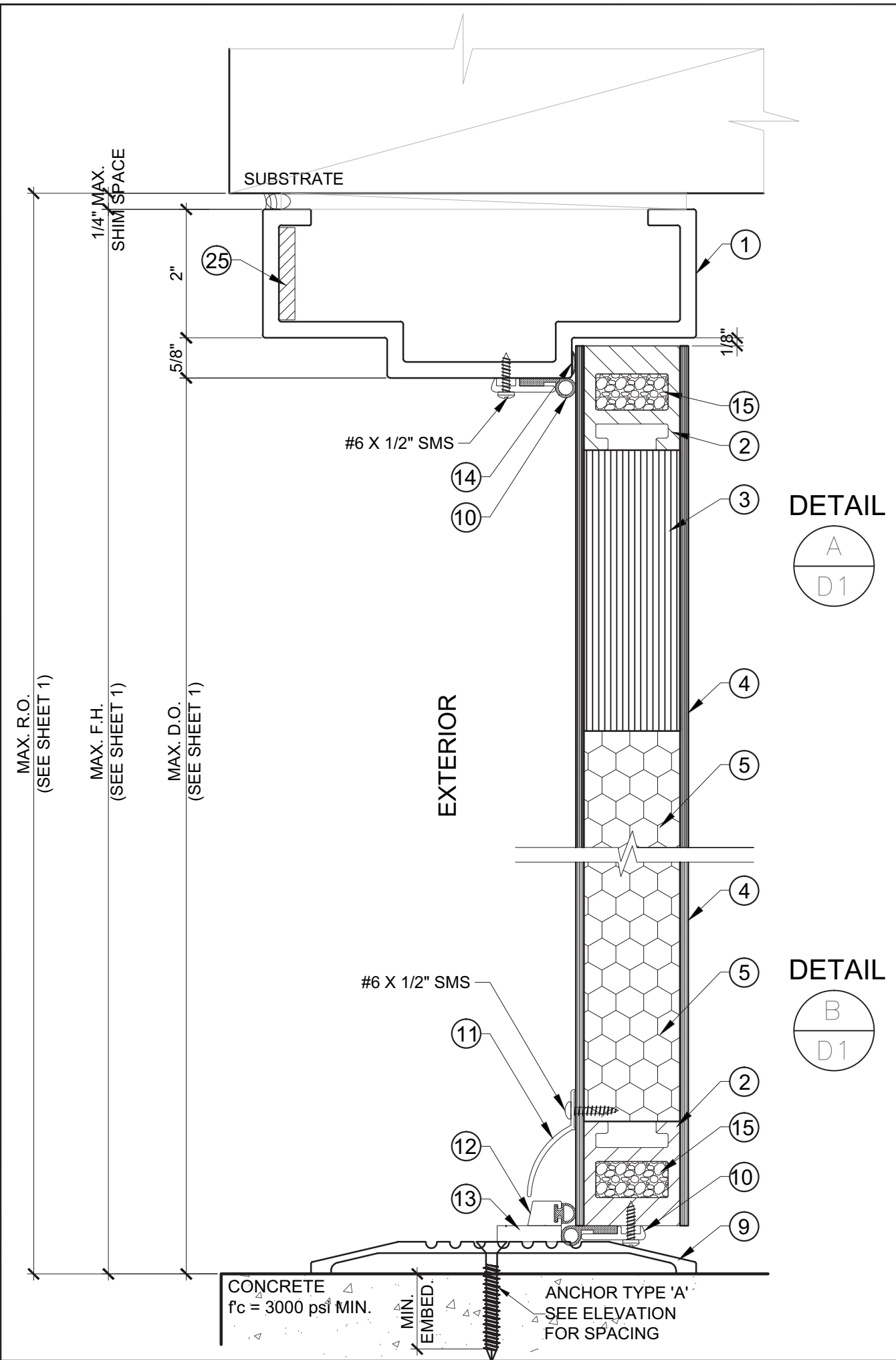
AF220 FIBERGLASS INSWING DOOR (LMI & SMI)

SPECIAL-LITE, INC.
 860 SOUTH WILLIAMS STREET
 P.O. BOX 6
 DECATUR, MI 49045
 WWW.SPECIAL-LITE.COM

FLORIDA APPROVAL:
 FL#19664

YIFENG WANG, P.E.
 PROFESSIONAL ENGINEER
 #55983
 C.A.N. 28637

ANCHORS	
DATE	12/06/16
SCALE	AS SHOWN
DRAWN	T.G.
PROJECT	16-102
DRAWING NO.	AD16-52
2 OF 8	



FLORIDA APPROVAL:
FL#19664

YIPING WANG
REGISTERED PROFESSIONAL ENGINEER
No 55983
C.A.N. 28637

STATE OF FLORIDA
PROFESSIONAL ENGINEER

NO	DATE	REVISIONS DESCRIPTION

MCY ENGINEERING, INC.
GLAZING CONSULTANTS

8501 SW 124 AVE. STE. 205A P: 305.271.0117
MIAMI, FL 33183 F: 786.573.5063

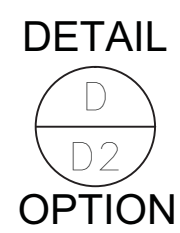
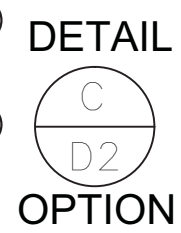
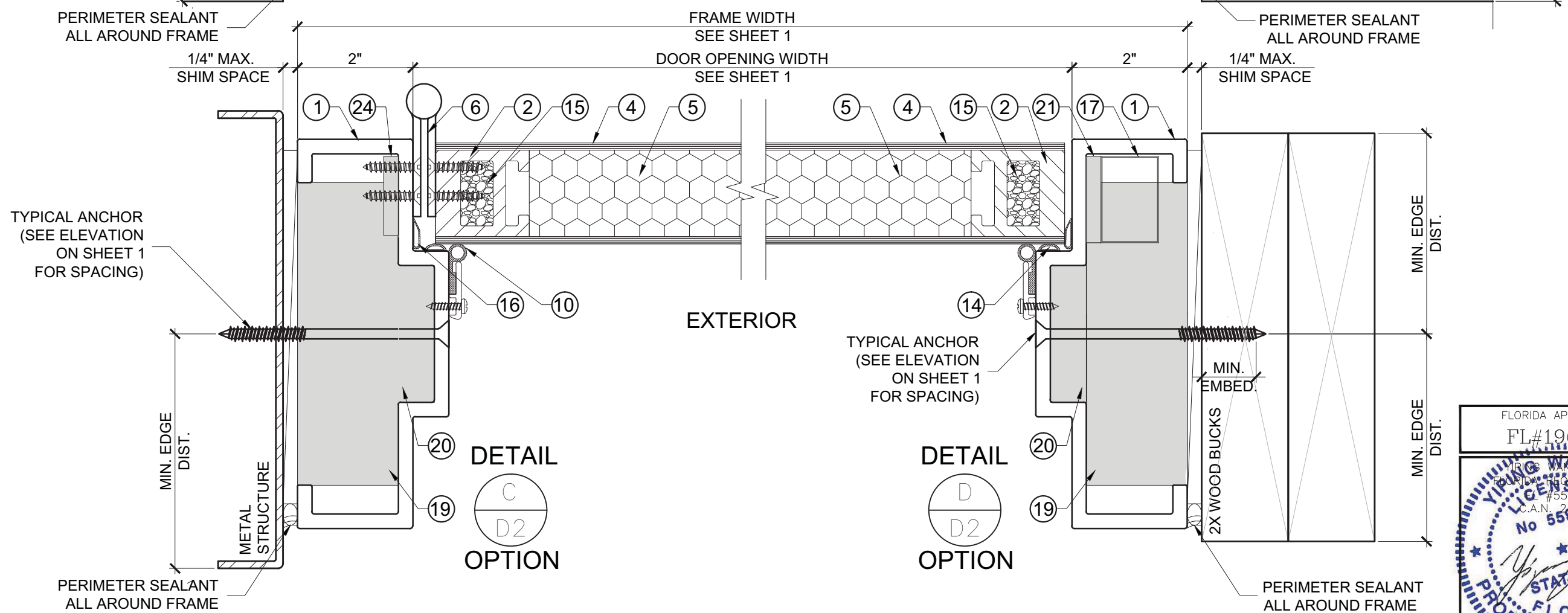
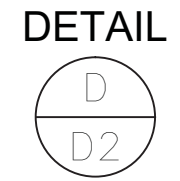
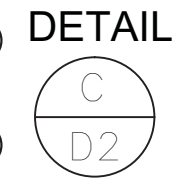
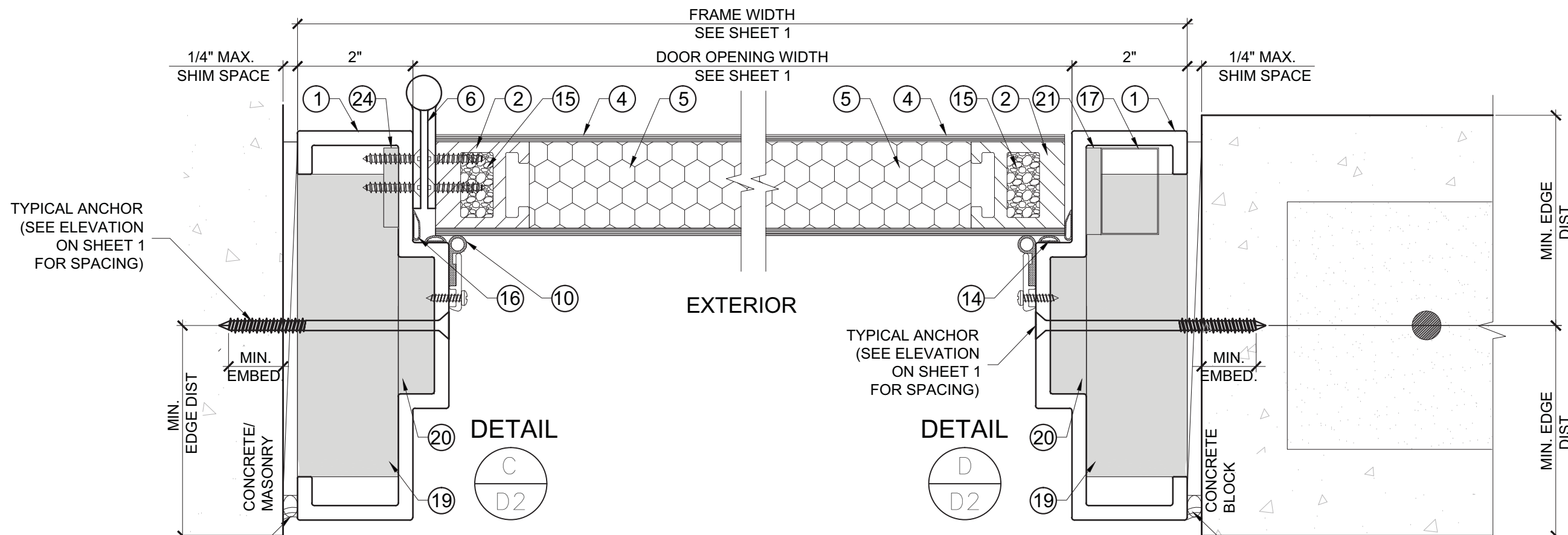
www.MCYUS.com MCY.Engineering@Att.net

AF220 FIBERGLASS INSWING DOOR (LMI & SMI)

SPECIAL-LITE, INC.
860 SOUTH WILLIAMS STREET
P.O. BOX 6
DECATUR, MI 49045
WWW.SPECIAL-LITE.COM



DATE	12/06/16
SCALE	AS SHOWN
DRAWN	T.G.
PROJECT	16-102
DRAWING NO.	AD16-52
3 OF 8	



NO.	DATE	DESCRIPTION

MCY ENGINEERING, INC.
GLAZING CONSULTANTS

8501 SW 124 AVE. STE. 205A P: 305.271.0117
MIAMI, FL 33183 F: 786.573.5063

www.MCYUS.com MCY.Engineering@Att.net

SPECIAL-LITE, INC.
AF220 FIBERGLASS INSWING DOOR (LMI & SMI)

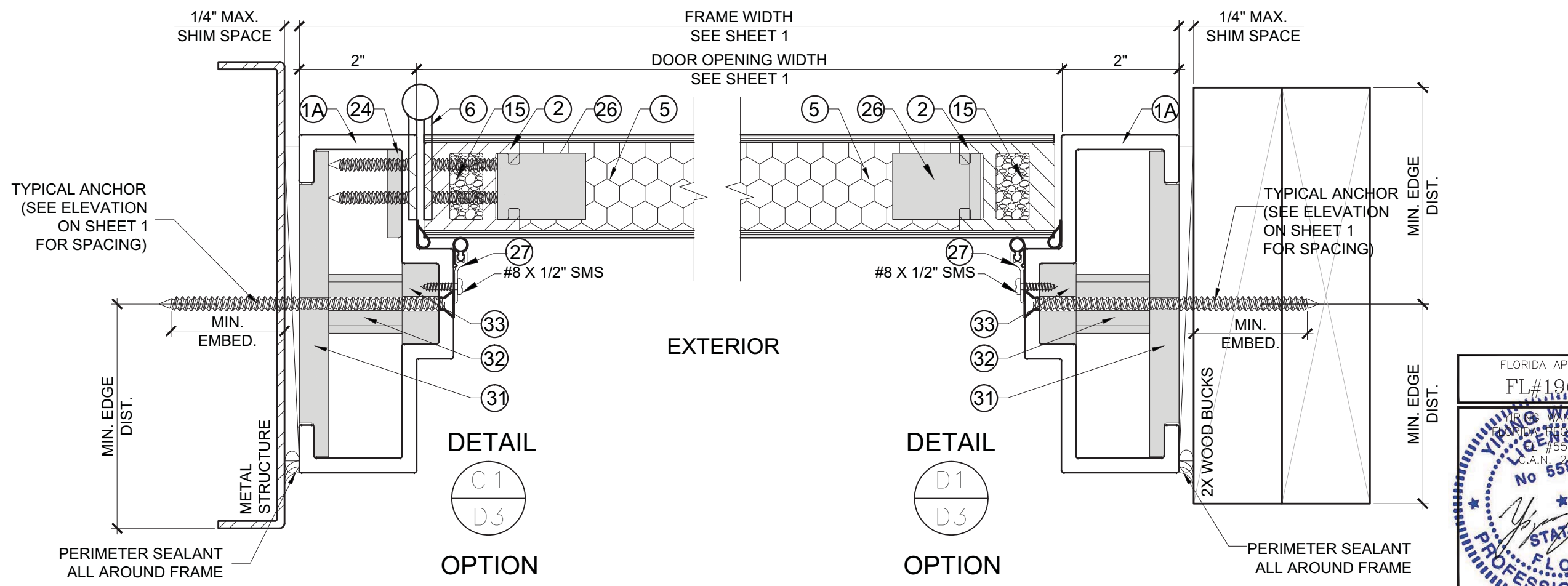
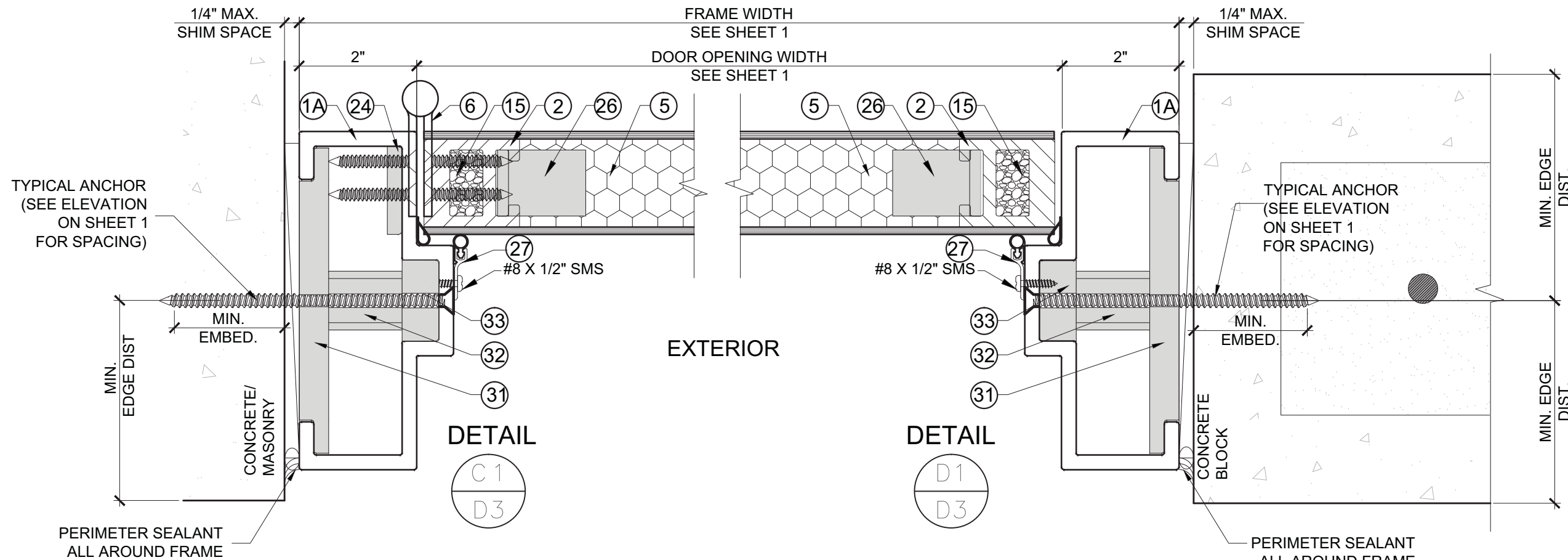
860 SOUTH WILLIAMS STREET
P.O. BOX 6
DECATUR, MI 49045
WWW.SPECIAL-LITE.COM



FLORIDA APPROVAL:
FL#19664

YIPING WANG
PROFESSIONAL ENGINEER
#55983
C.A.N. 28637

D2
DATE 12/06/16
SCALE AS SHOWN
DRAWN T.G.
PROJECT 16-102
DRAWING NO. AD16-52
4 OF 8



NO.	DATE	DESCRIPTION

MCY ENGINEERING, INC.
GLAZING CONSULTANTS

8501 SW 124 AVE. STE. 205A P: 305.271.0117
MIAMI, FL 33183 F: 786.573.5063

www.MCYUS.com MCY.Engineering@Att.net

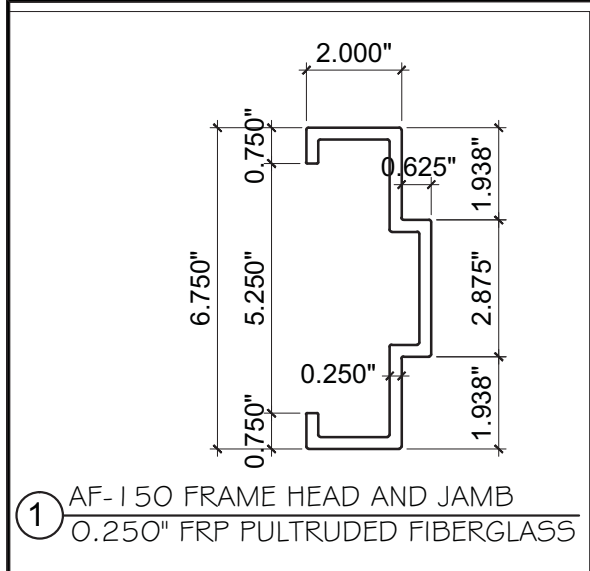
SPECIAL-LITE, INC.
860 SOUTH WILLIAMS STREET
P.O. BOX 6
DECATUR, MI 49045
WWW.SPECIAL-LITE.COM



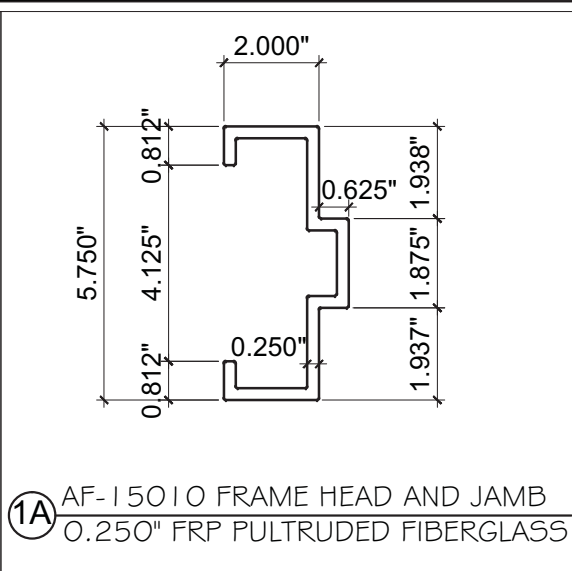
FLORIDA APPROVAL:
FL#19664

YIPING WANG
REGISTERED PROFESSIONAL ENGINEER
#55983
C.A.N. 28637

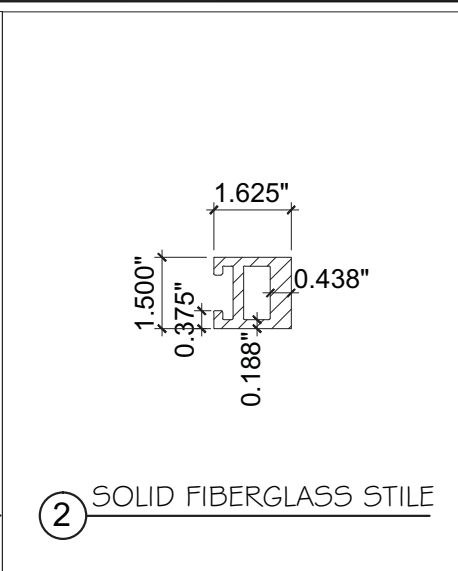
D3
DATE 12/06/16
SCALE AS SHOWN
DRAWN T.G.
PROJECT 16-102
DRAWING NO. AD16-52
5 OF 8



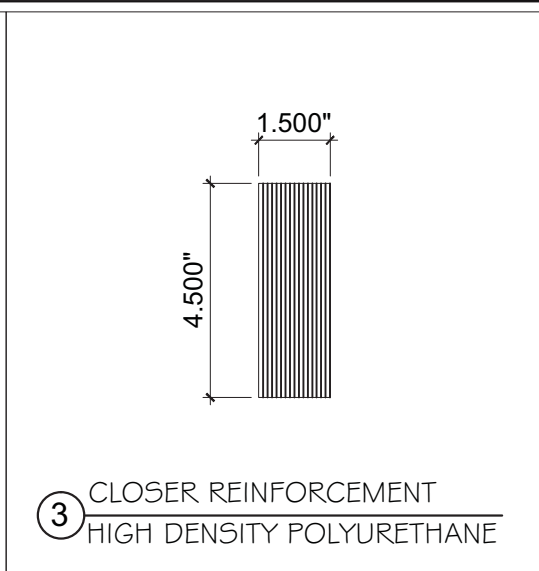
① AF-150 FRAME HEAD AND JAMB
0.250" FRP PULTRUDED FIBERGLASS



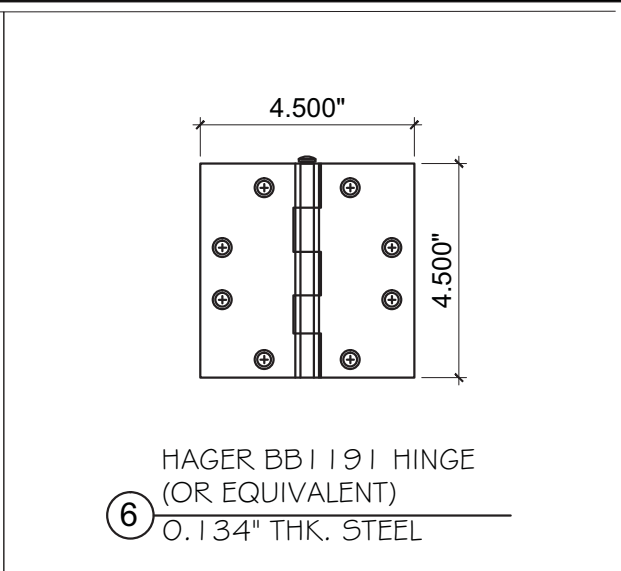
①A AF-150 IO FRAME HEAD AND JAMB
0.250" FRP PULTRUDED FIBERGLASS



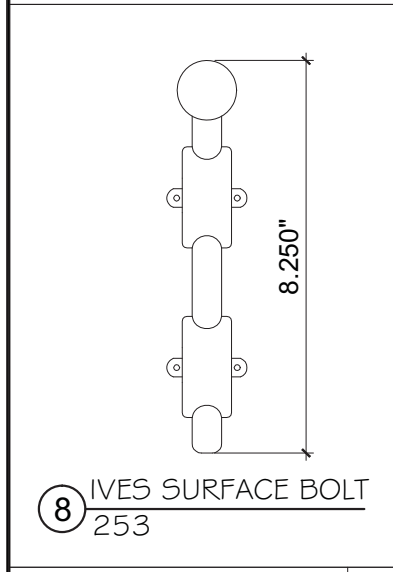
② SOLID FIBERGLASS STILE



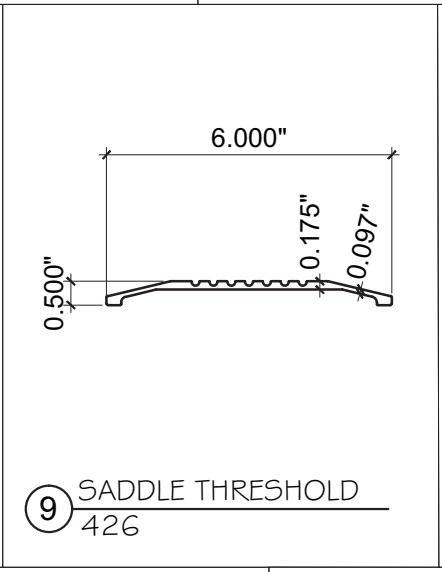
③ CLOSER REINFORCEMENT
HIGH DENSITY POLYURETHANE



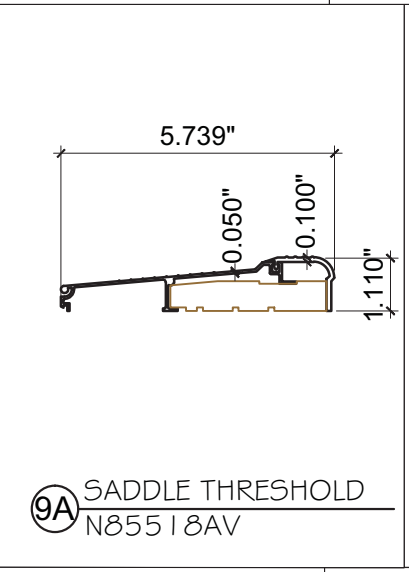
⑥ HAGER BB191 HINGE
(OR EQUIVALENT)
0.134" THK. STEEL



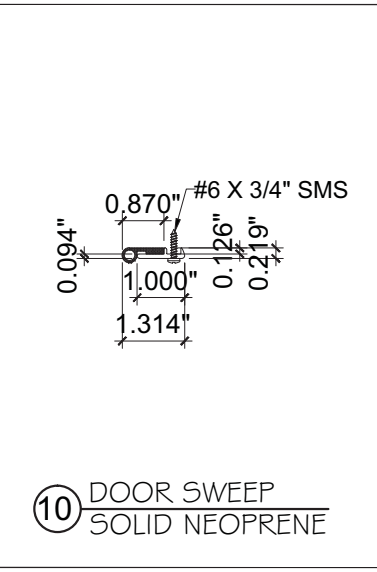
⑧ IVES SURFACE BOLT
253



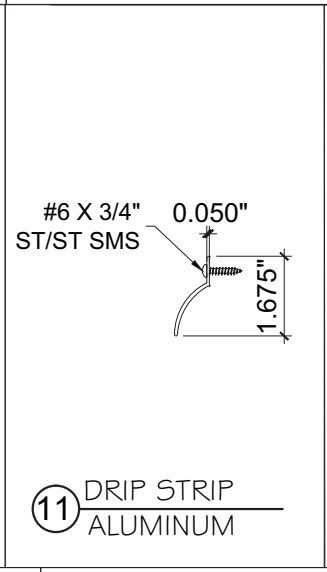
⑨ SADDLE THRESHOLD
426



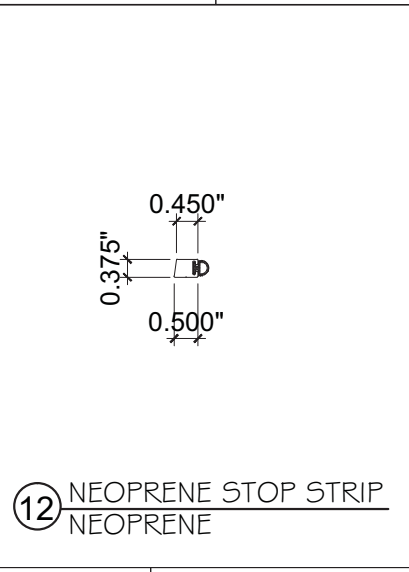
⑨A SADDLE THRESHOLD
N85518AV



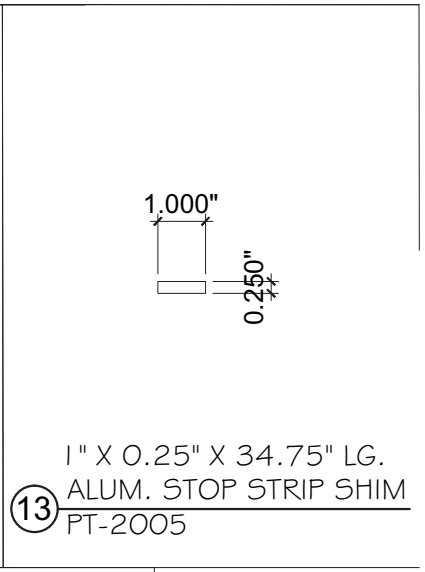
⑩ DOOR SWEEP
SOLID NEOPRENE



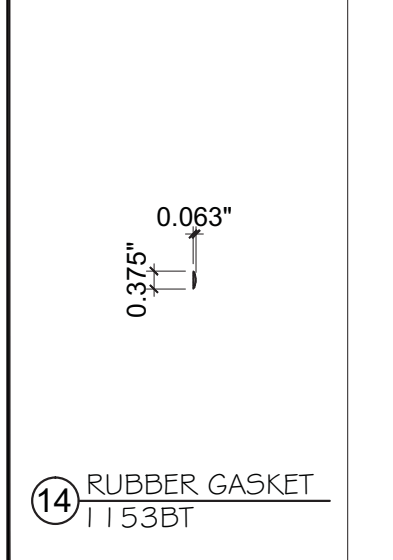
⑪ DRIP STRIP
ALUMINUM



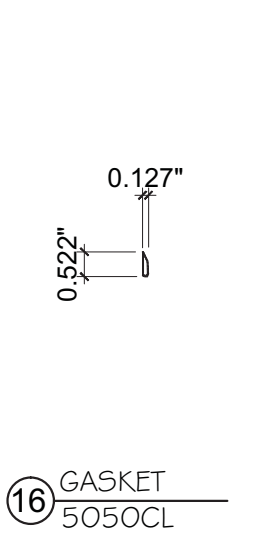
⑫ NEOPRENE STOP STRIP
NEOPRENE



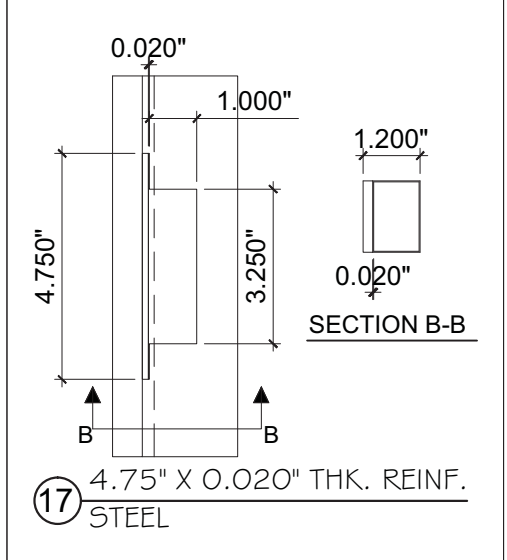
⑬ 1" X 0.25" X 34.75" LG.
ALUM. STOP STRIP SHIM
PT-2005



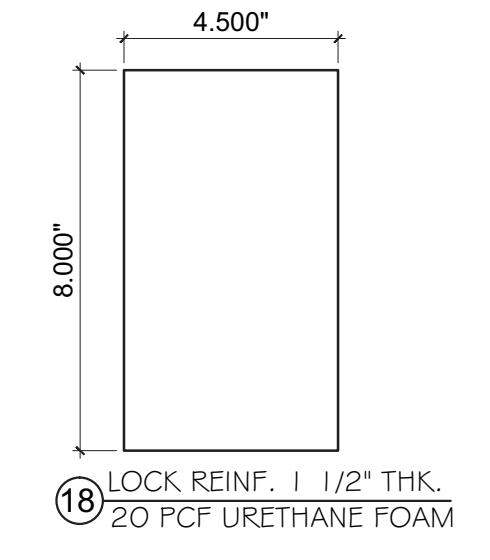
⑭ RUBBER GASKET
1153BT



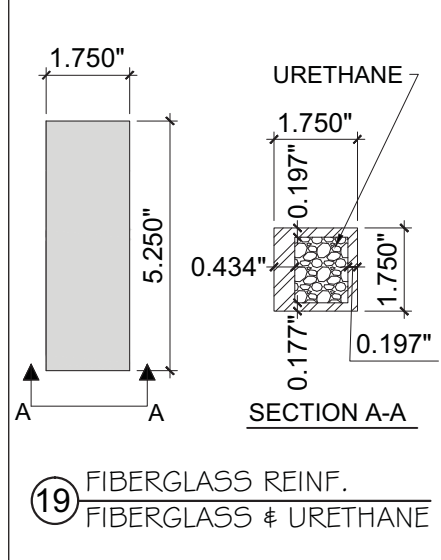
⑮ GASKET
5050CL



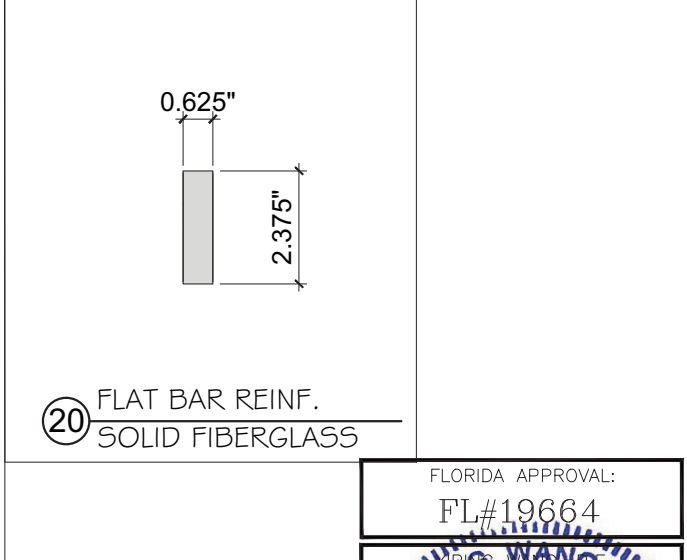
⑰ 4.75" X 0.020" THK. REINF.
STEEL



⑱ LOCK REINF. 1 1/2" THK.
20 PCF URETHANE FOAM



⑲ FIBERGLASS REINF.
FIBERGLASS & URETHANE



⑳ FLAT BAR REINF.
SOLID FIBERGLASS

FLORIDA APPROVAL:
FL#19664

YIPING WANG
REGISTERED PROFESSIONAL ENGINEER
#55983
C.A.N. 28637

NO.	DATE	DESCRIPTION

MCY ENGINEERING, INC.
GLAZING CONSULTANTS

8501 SW 124 AVE. STE. 205A P: 305.271.0117
MIAMI, FL 33183 F: 786.573.5063

www.MCYUS.com MCY.Engineering@Att.net

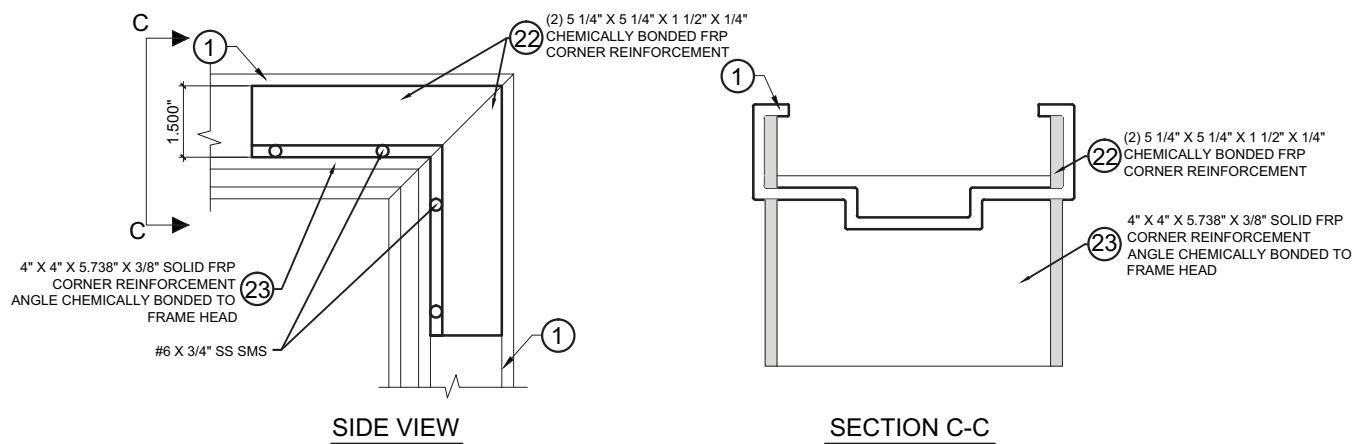
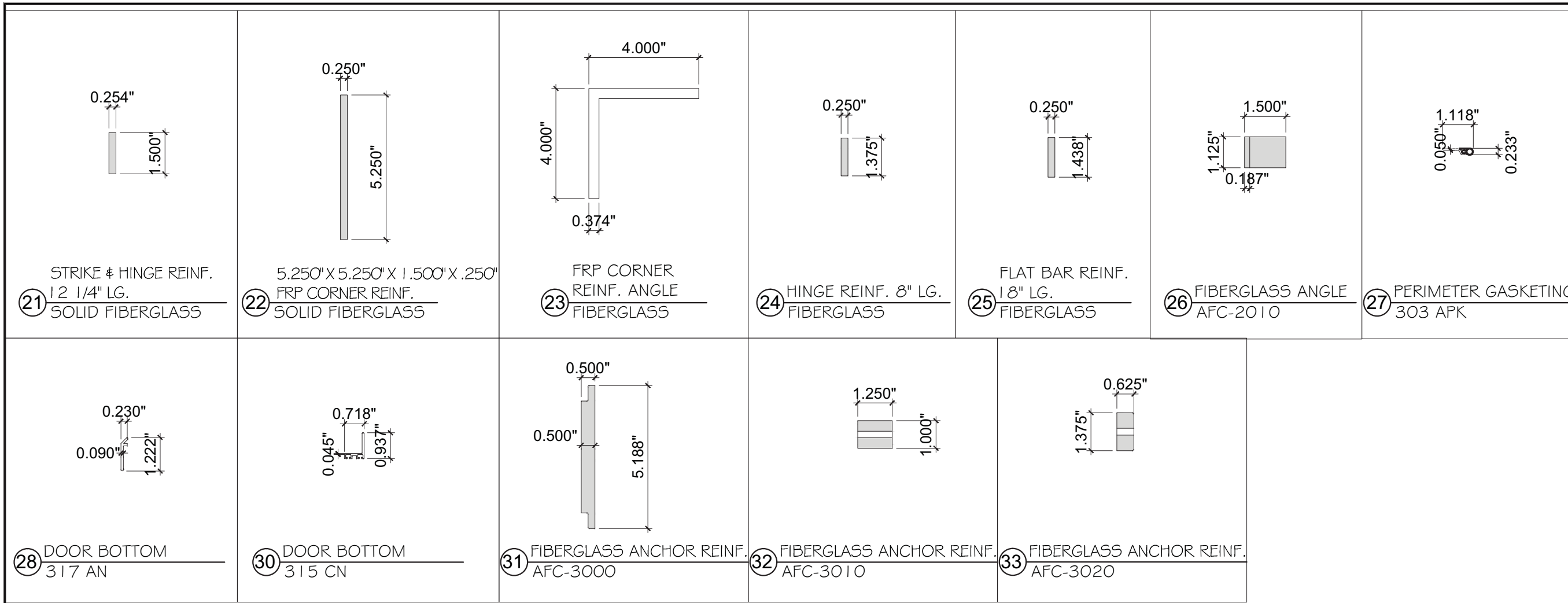
SPECIAL-LITE, INC.
860 SOUTH WILLIAMS STREET
P.O. BOX 6
DECATUR, MI 49045
WWW.SPECIAL-LITE.COM

AF220 FIBERGLASS INSWING DOOR (LMI & SMI)

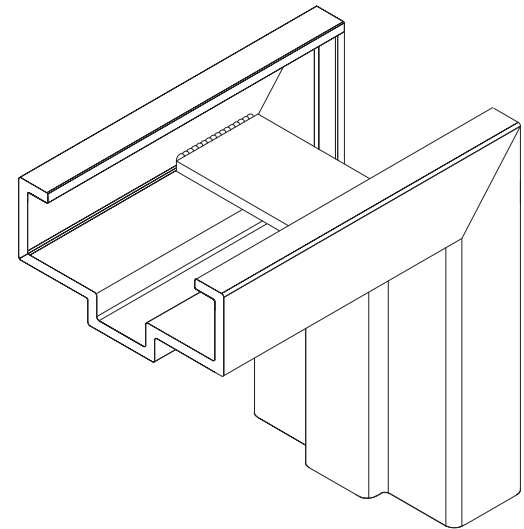
Special-Lite
Doors with more life.

PARTS

DATE	12/06/16
SCALE	AS SHOWN
DRAWN	T.G.
PROJECT	16-102
DRAWING NO.	AD16-52
6 OF 8	



TYP. CORNER REINFORCEMENT



FRAME CORNER CONSTRUCTION

FLORIDA APPROVAL:
FL#19664

YIPING WANG
REGISTERED PROFESSIONAL ENGINEER
#55983
C.A.N. 28637

STATE OF FLORIDA
PROFESSIONAL ENGINEER

PARTS	
DATE	12/06/16
SCALE	AS SHOWN
DRAWN	T.G.
PROJECT	16-102
DRAWING NO.	AD16-52
7 OF 8	

REVISIONS		
NO.	DATE	DESCRIPTION

MCY ENGINEERING, INC.
GLAZING CONSULTANTS

8501 SW 124 AVE. STE. 205A P: 305.271.0117
MIAMI, FL 33183 F: 786.573.5063

www.MCYUS.com MCY.Engineering@Att.net

AF220 FIBERGLASS INSWING DOOR (LMI & SMI)

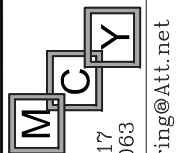
SPECIAL-LITE, INC.
860 SOUTH WILLIAMS STREET
P.O. BOX 6
DECATUR, MI 49045
WWW.SPECIAL-LITE.COM

Special-Lite
Doors with more life.

BILL OF MATERIALS

ITEM	PART NO.	MATERIAL	QTY.	DESCRIPTION	MANUFACTURER / SUPPLIER / REMARKS
1	AF-150	PULTRUDED FIBERGLASS	AS REQD.	FRAME JAMB / HEAD (6 3/4" X 2")	SPECIAL-LITE INC. (0.250" THK.) Fy=40.8 KSI MIN.
1A	AF-15010	PULTRUDED FIBERGLASS	AS REQD.	FRAME JAMB / HEAD (5 3/4" X 2")	SPECIAL-LITE INC. (0.250" THK.) Fy=40.8 KSI MIN.
2	AFC-2000	PULTRUDED FIBERGLASS	AS REQD.	SOLID FIBERGLASS STILE	SPECIAL-LITE INC.
3	AFC-2020	URETHANE	AS REQD.	4 1/2" X 1 1/2" X 20" 20 PCF URETHANE CLOSER REINFORCEMENT	INSIDE THE TOP LEFT SIDE OF THE PANEL CHEMICALLY BONDED
4	-	FIBERGLASS	AS REQD.	0.120" SANDSTONE FRP TEXTURED FACE SHEET	SPECIAL-LITE INC.
	-	FIBERGLASS	AS REQD.	0.120" PEBBLE GRAIN FRP TEXTURED FACE SHEET	SPECIAL-LITE INC.
5	PP8-80	POLYPROPYLENE	AS REQD.	AIR-COMB (OR EQUIVALENT) POLYPROPYLENE HONEYCOMB DOOR PANEL CORE	POLY-U-MAC
6	BB1191	ST/ST	3	HAGER BB1191 (OR EQUIVALENT) 4 1/2" SURFACE MOUNT METALLIC BUTT HINGE	HAGER, ATTACHED W/ (4) 12 X 1" FH SMS TO FRAME AND (4) 12 X 1" FH SMS TO PANEL
7	790	ST/ST	1	KABA 790 (OR EQUIVALENT) RFID MORTISE LOCK SET W/ KEY OVERRIDE	KABA
7A	45H7AB15H626LHRB	ST/ST	1	STANLEY (OR EQUIVALENT) MORTISE LOCK SET W/ KEY OVERRIDE	STANLEY
8	253	STEEL	AS REQD.	MES 253 SURFACE BOLT	MES
9	426	ALUM.	AS REQD.	SADDLE THRESHOLD	NATIONAL GUARD PRODUCTS
9A	N85518AV	ALUM.	AS REQD.	SADDLE THRESHOLD	PEMKO ASSA ABLOY
10	328AA	SOLID NEOPRENE	AS REQD.	DOOR SWEEP	ZERO INTERNATIONAL
11	17	ALUMINUM	AS REQD.	RAIN DRIP GUARD	NATIONAL GUARD PRODUCTS
12	2N	NEOPRENE	AS REQD.	NEOPRENE STOP STRIP	NATIONAL GUARD PRODUCTS
13	PT-2005	ALUM.	AS REQD.	1" X 0.25" X 34.75" LG. ALUMINUM STOP STRIP SHIM	-
14	1153BT	RUBBER	AS REQD.	RUBBER SEAL	TRIM-LOK
15	-	URETHANE	AS REQD.	URETHANE FOAM	-
16	5050CL	SILICONE	AS REQD.	ADHESIVE SILICONE GASKET	NATIONAL GUARD PRODUCTS
17	-	STEEL	AS REQD.	4.745" X 0.020" THK. STEEL REINFORCEMENT	BEHIND STRIKE PLATE, ATTACHED W/ (2) 12 X 1 1/2" FH SMS
18	-	URETHANE FOAM	AS REQD.	4 1/2" X 1 1/2" X 8" LG. 20 PCF URETHANE FOAM REINFORCEMENT	INSIDE PANEL AT LOCK LOCATION, CHEMICALLY BONDED
19	-	FIBERGLASS & URETHANE	AS REQD.	1 3/4" X 1 3/4" X 5 3/4" LG. FIBERGLASS BLOCK REINFORCEMENT	INSIDE FRAME JAMB AT EACH ANCHOR LOCATION, CHEMICALLY BONDED
20	-	FIBERGLASS	AS REQD.	1 3/4" X 2 3/8" X 5/8" THK. FIBERGLASS FLAT BAR REINFORCEMENT	BEHIND EACH FRAME JAMB BLOCK, CHEMICALLY BONDED TO FRAME
21	-	FIBERGLASS	AS REQD.	1 1/2" X 12 1/4" LG X 0.254" THK. FIBERGLASS FLAT BAR REINFORCEMENT	AT STRIKE PLATE LOCATION, CHEMICALLY BONDED
22	-	FIBERGLASS	AS REQD.	5 1/4" X 5 1/4" X 1 1/2" X 1/4" THK. FRP CORNER REINFORCEMENT	FASTENED TO 4" X 4" ANGLE USING (4) 8 X 3/4" FH SMS AND CHEMICALLY BONDED
23	-	FIBERGLASS	AS REQD.	4" X 4" X 5.738" X 0.374" THK. SOLID FRP CORNER REINFORCEMENT ANGLE	AT UPPER CORNER, CHEMICALLY BONDED
24	AFC-3030	PULTRUDED FIBERGLASS		1 3/8" X 8" LG. X 1/4" THK. HINGE REINF.	CHEMICALLY BONDED TO FRAME
25	-	FIBERGLASS	AS REQD.	1 7/16" X 18" X 1/4" THK. FIBERGLASS FLAT BAR REINFORCEMENT	AT FRAME HEAD, CHEMICALLY BONDED TO FRAME
26	AFC-2010	FIBERGLASS	AS REQD.	1 1/2" X 1 1/8" X 3/16" ANGLE	AT TOP AND BOTTOM RAIL
27	303APK	-	3	PERIMETER GASKETING	PEMKO ASSA ABLOY
28	317AN	-	1	DOOR BOTTOM	PEMKO ASSA ABLOY
30	315CN	-	1	DOOR BOTTOM	PEMKO ASSA ABLOY
31	AFC3000	FIBERGLASS	1	ANCHOR REINFORCEMENT	INSIDE THE FRAME JAMB AT EACH FASTENER LOCATION
32	AFC3010	FIBERGLASS	1	ANCHOR REINFORCEMENT	INSIDE THE FRAME JAMB AT EACH FASTENER LOCATION
33	AFC3020	FIBERGLASS	1	ANCHOR REINFORCEMENT	INSIDE THE FRAME JAMB AT EACH FASTENER LOCATION
34	S88D	SILICONE	1	ADHESIVE SILICONE GASKET	PEMKO ASSA ABLOY
35	AFC-2050	URETHANE FOAM	1	4 1/2" X 1 1/2" X 15" LG. 20 PCF URETHANE FOAM REINFORCEMENT	INSIDE THE PANEL AT LOCK LOCATION

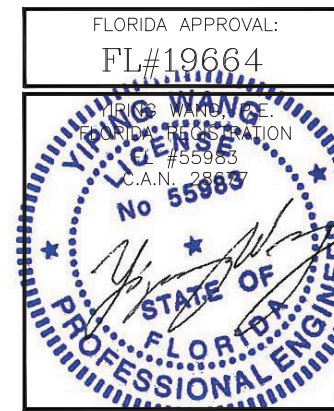
NO.	DATE	DESCRIPTION



MCY ENGINEERING, INC.
GLAZING CONSULTANTS

8501 SW 124 AVE. STE. 205A P: 305.271.0117
MIAMI, FL 33183 F: 786.573.5063
www.MCYUS.com MCY.Engineering@Att.net

AF220 FIBERGLASS INSWING DOOR (LMI & SMI)
SPECIAL-LITE, INC.
860 SOUTH WILLIAMS STREET
P.O. BOX 6
DECATUR, MI 49045
WWW.SPECIAL-LITE.COM



BOM	
DATE	12/06/16
SCALE	AS SHOWN
DRAWN	T.G.
PROJECT	16-102
DRAWING NO.	AD16-52
8 OF 8	